



ELIGIBILITY CENTER

HELPING ATHLETES PLAY AT THE NCAA LEVEL

For High School & Club Coaches



Daniel Scotto

Coordinator of
Communications,
Eligibility Center



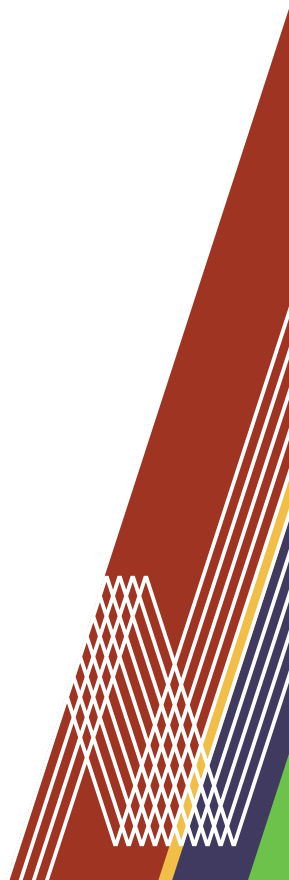
Ivorye Long

Assistant Director of
Outreach and
Strategic Partnerships



AGENDA

- » [NCAA Eligibility Center.](#)
- » [NCAA Schools.](#)
- » [Registration is Required.](#)
- » [Core Courses.](#)
- » [Certification Outcomes.](#)
 - [Division I.](#)
 - [Division II.](#)
- » [Coaches Perspective.](#)
- » [Recruiting.](#)
- » [Resources.](#)





ELIGIBILITY CENTER



NCAA ELIGIBILITY CENTER





NCAA ELIGIBILITY CENTER

- » **Who are we?** A unit within the NCAA.
- » **What do we provide?** Certification of college-bound student-athletes for collegiate competition.
- » **What do we review?**
 - Academic requirements.
 - Amateurism requirements.





CHOOSING AN NCAA SCHOOL



School Size



School Location



Majors
and Minors



Cost of
Attendance



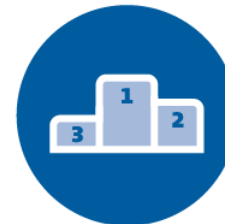
Admission
Requirements



Culture
and Affiliations



Student-to-
Faculty Ratio

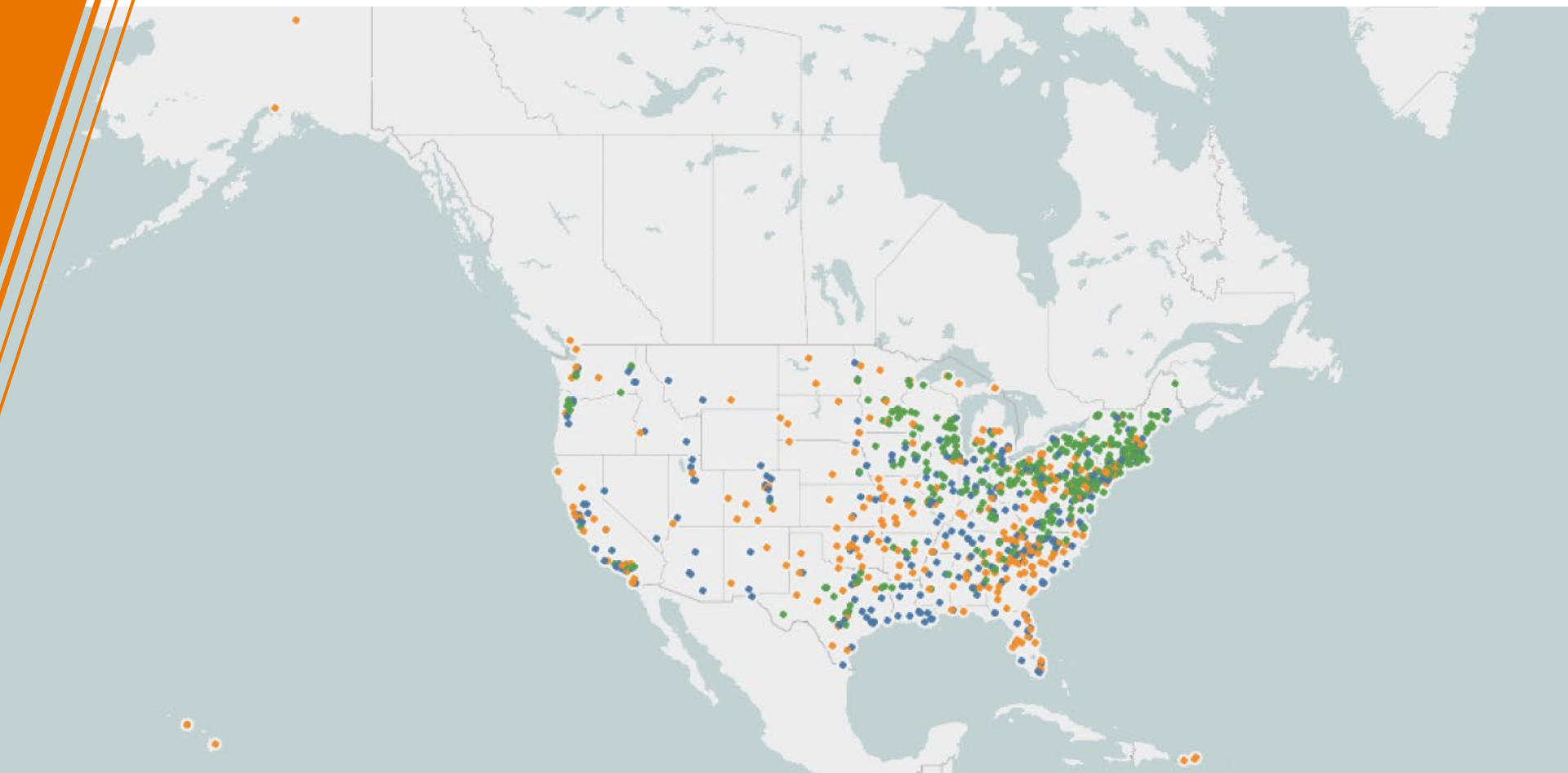


Playing Time

» Encourage your students to this [interactive map](#) to locate NCAA schools they're interested in attending.



ELIGIBILITY CENTER



NCAA SCHOOLS



THREE REQUIREMENTS TO PLAY COLLEGE SPORTS



High School
Graduation



NCAA
Initial Eligibility



College
Admission



COLLEGE ADMISSION

- » Apply and be accepted to the NCAA school before they can compete.
 - NCAA certification does **NOT** include acceptance to the NCAA school recruiting them.
- » Ask college admission about:
 - Cost of attendance.
 - Financial aid.
 - Standardized test scores.
 - > May be required for college admission or scholarships.
 - > NOT required for NCAA certification.
 - For more questions to ask, visit on.ncaa.com/ChoosingCollege.



SCHOLARSHIPS BY SPORT

Only about **2%** of high school-athletes are awarded athletics scholarships to compete in college.

- » Academic scholarships.
- » Athletics scholarships.
- » Expectations.
 - Annual scholarships.
 - Full scholarships.
 - Partial scholarships.
 - Scholarship renewals.





ELIGIBILITY CENTER

[Forgot your password?](#)

[Login](#)

[Help](#)

[High School Administrators](#)

WANT TO PLAY COLLEGE SPORTS?

Creating an account is the first step toward becoming an NCAA student-athlete



[REGISTER](#)

NOT SURE WHICH DIVISION YOUR
SCHOOL IS IN?

[Learn more](#) or [search NCAA schools](#).

NCAA REGISTRATION IS REQUIRED

Register Before Freshman Year



NCAA REGISTRATION IS REQUIRED

Three Account Types



**Free Profile Page
Account**



**Academic
and Amateurism
Certification Account**



**Amateurism-Only
Certification Account**



FREE PROFILE PAGE ACCOUNT

Account Type #1



The right place to start for most students!

- » Not sure in which division they plan to compete.
- » Domestic students planning to compete at a [Division III school](#).
- » Registering in an NCAA-certified nonscholastic basketball event ([BBCS](#), ECAG, AAU).



No registration fee.



[Transition](#) to the right [certification account](#) at any time.



ACADEMIC AND AMATEURISM CERTIFICATION ACCOUNT

Account Type #2



Required to compete at a Division I or II school.

- » Go on [official visits](#).
- » Sign a [National Letter of Intent](#).
- » Receive an athletics scholarship.



Registration fee:

- » [Domestic students](#): \$100.
- » [International students](#): \$160.



AMATEURISM-ONLY CERTIFICATION ACCOUNT

Account Type #3



Required for all [international student-athletes](#) planning to compete at a Division III school.



Registration fee:
» \$70.



Student-athletes transferring from a two-year school to an NCAA Division I or II school who did not require an Eligibility Center academic certification.



REMEMBER

- » If your student has an Eligibility Center certification account, remind them to check if they meet [fee waiver criteria](#).
- » Fee waiver information is submitted by the student's current high school counselor.



ELIGIBILITY CENTER



CORE COURSES



ELIGIBILITY CENTER

A close-up photograph of a person wearing a green athletic shirt, holding two bright pink and black athletic shoes. The person's face is partially visible in the background, looking down at the shoes. The shoes have black accents and pink laces. The background is slightly blurred, focusing attention on the shoes and the person's hands.

CERTIFICATION OUTCOMES

Divisions I and II





Division I CERTIFICATION OUTCOMES

1. [Early Academic Qualifier.](#)
2. [Qualifier.](#)
3. [Academic Redshirt.](#)
4. [Nonqualifier.](#)





DIVISION I: QUALIFIER



Complete 16 core-course units in the required subject areas.



Meet core-course progression before the seventh semester.

Note: Students certified based solely on international credentials are exempt from core-course progression.



Earn a core-course GPA ≥ 2.3 in the required subject areas.



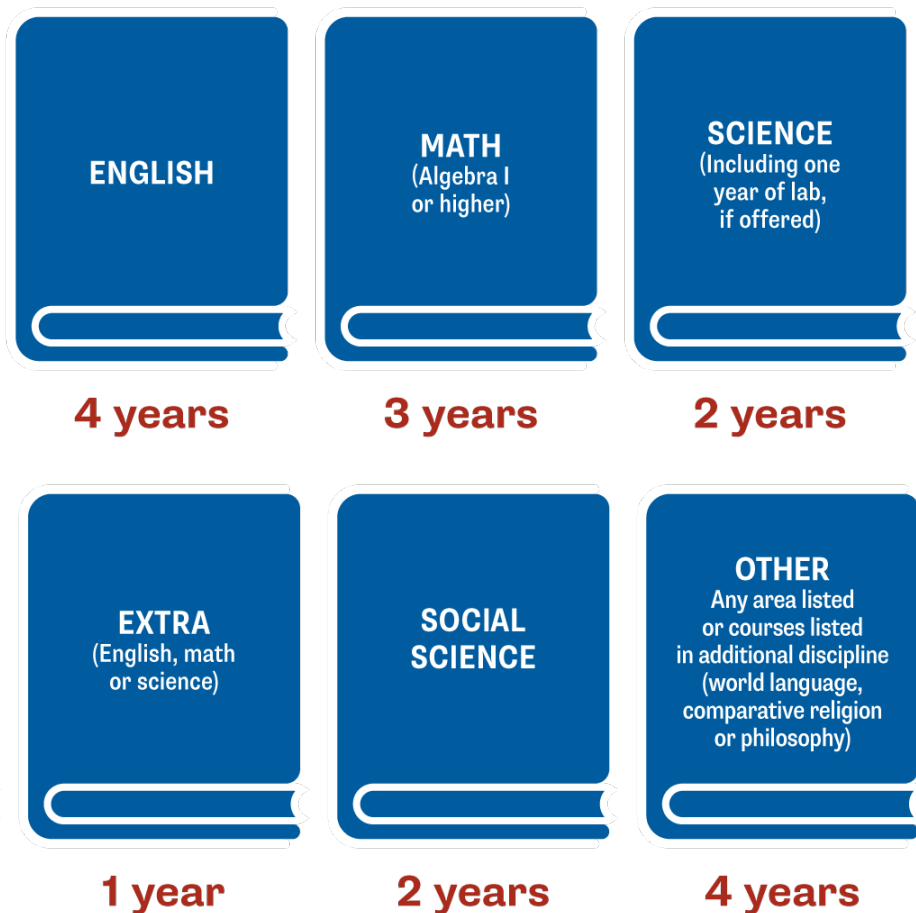
Submit proof of graduation to the Eligibility Center.

- » Athletics Aid.
- » Practice.
- » Compete.



DIVISION I: QUALIFIER

Subject Area Breakdown





DIVISION I: ACADEMIC REDSHIRT



Complete 16 core-course units in the required subject areas.



Earn a core-course GPA ≥ 2.0 in the required subject areas.



Submit proof of graduation to the Eligibility Center.

- » First Year Athletics Aid.
- » First Term Practice.



DIVISION I: NONQUALIFIER



Nonqualifiers are not eligible to receive athletics aid, practice or compete their first year at an NCAA Division I school.

» ~~Athletics Aid.~~

» ~~Practice.~~

» ~~Compete.~~



Division II CERTIFICATION OUTCOMES

1. [Early Academic Qualifier.](#)
2. [Qualifier.](#)
3. [Partial Qualifier.](#)



DIVISION II: QUALIFIER



Complete 16 core-course units in the required subject areas.



Earn a core-course GPA ≥ 2.2 in the required subject areas.



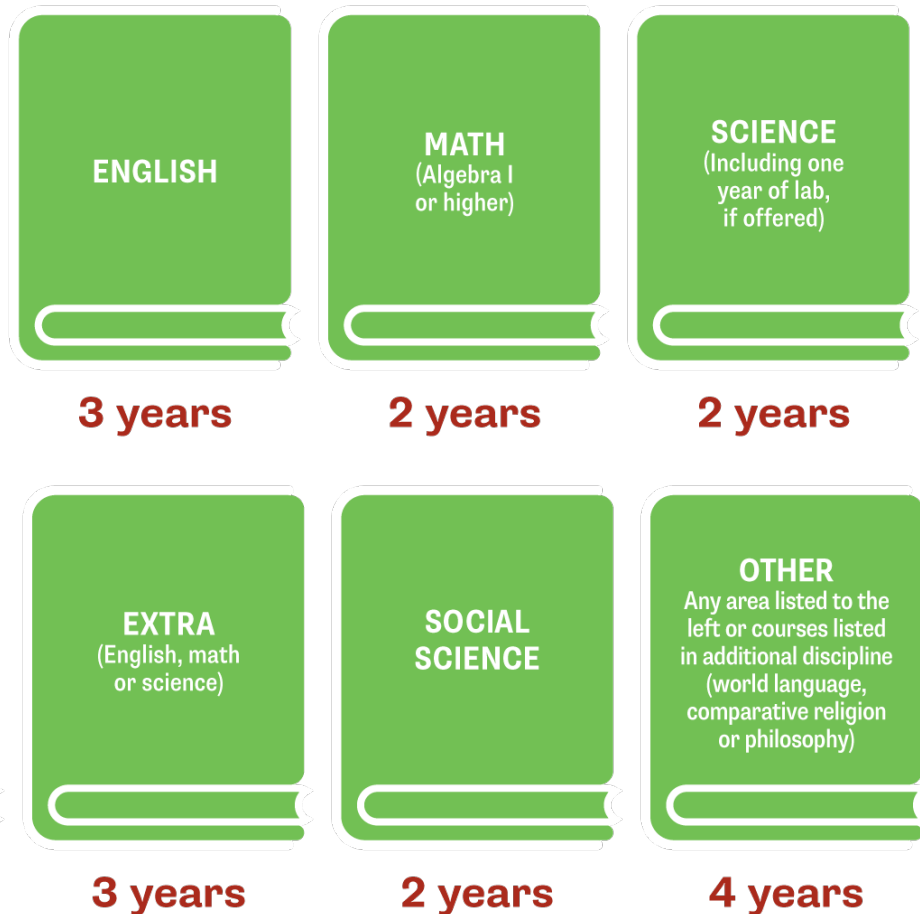
Submit proof of graduation to the Eligibility Center.

- » Athletics Aid.
- » Practice.
- » Compete.



DIVISION II: QUALIFIER

Subject Area Breakdown





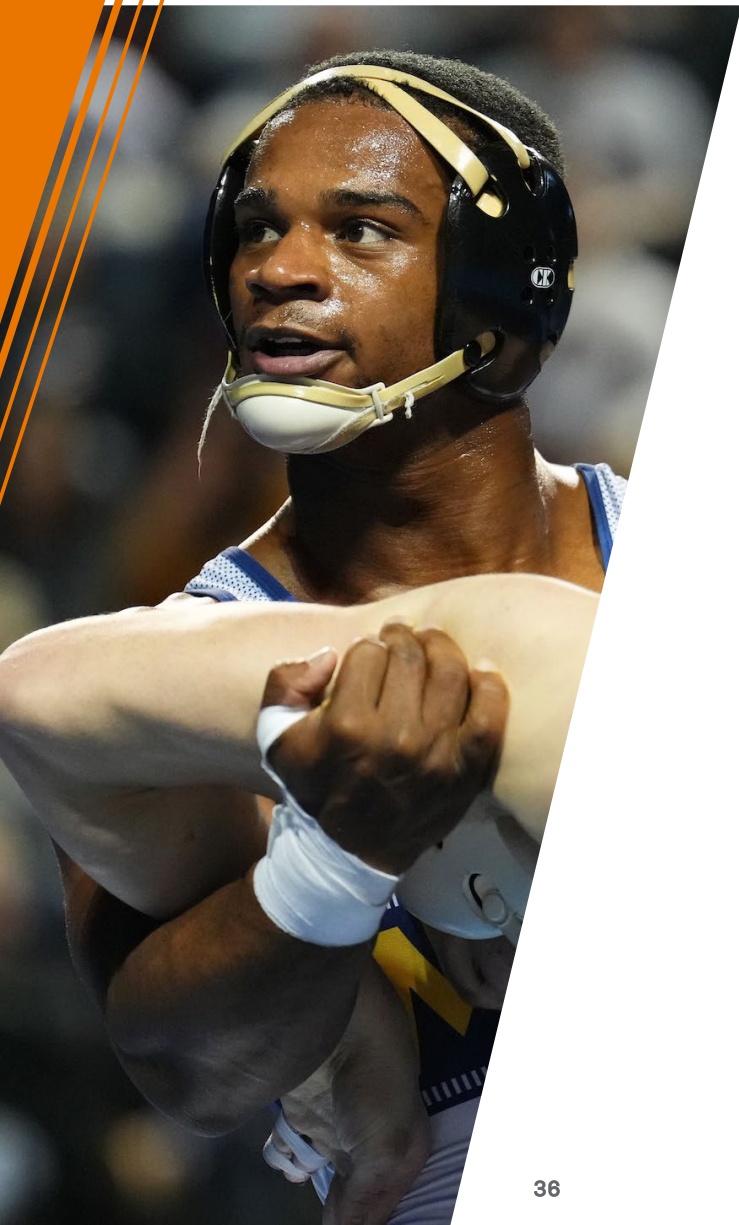
DIVISION II: PARTIAL QUALIFIER

College-bound student-athletes who do not meet Division II qualifier standards will be deemed a partial qualifier.



Submit proof of graduation to the Eligibility Center.

- » Athletics Aid.
- » Practice.



DIVISION III

- » Each Division III school determines its own eligibility for:
 - Academic requirements.
 - Admission.
 - Financial aid.
- » **International student-athletes** who plan to compete at a Division III school must complete an NCAA Eligibility Center Amateurism-Only Certification account.
- » Domestic student-athletes who plan to compete at a Division III school may register for a free Profile Page account, but it is not required.



ELIGIBILITY CENTER



COACHES PERSPECTIVE





ELIGIBILITY CENTER

HELPING ATHLETES PLAY AT THE NCAA LEVEL

Coaches Perspective



Jason Seidel

Head Football Coach, Jay M
Robinson High School
Concord, NC



Lisa Langston

Director of Athletic
Department, Fort Worth
Independent School District



ELIGIBILITY CENTER



RECRUITING





IS YOUR STUDENT BEING RECRUITED?

» A student is being recruited if a college coach:



Calls



Texts



Emails



**Messages via
Social Media**



**Visits Your
High School**



**Pays Expenses to
Visit Campus**



**Issues National
Letter of Intent**



**Writes Offer
of Financial Aid**

» Recruiting can begin as early as freshman year.

- In most cases, recruiting starts before junior year.



OFFICIAL VS UNOFFICIAL VISITS

OFFICIAL VISITS

Official visits are any visit to a college campus paid for by the NCAA school the student is visiting. Before a Division I or II official visit, the student must:



Register for
an EC Account



Be on an IRL



Send High
School Transcripts

UNOFFICIAL VISITS

Unofficial visits are any visit to a college campus paid by the student or their family members.



QUESTIONS TO ASK NCAA COACHES

- » Additional team responsibilities.
- » Athletic training and medical expenses.
- » Coaching philosophy and style.
- » Injuries and rehabilitation.
- » Mental health resources.
- » Playing time.
 - Am I a top seed, five seed or standby recruit?
 - Are there any redshirt expectations?
- » Scholarship renewals.
 - Will I receive a full or partial scholarship?
 - If I'm injured will my scholarship remain?
- » Team time demands vs. Selected major/minor.



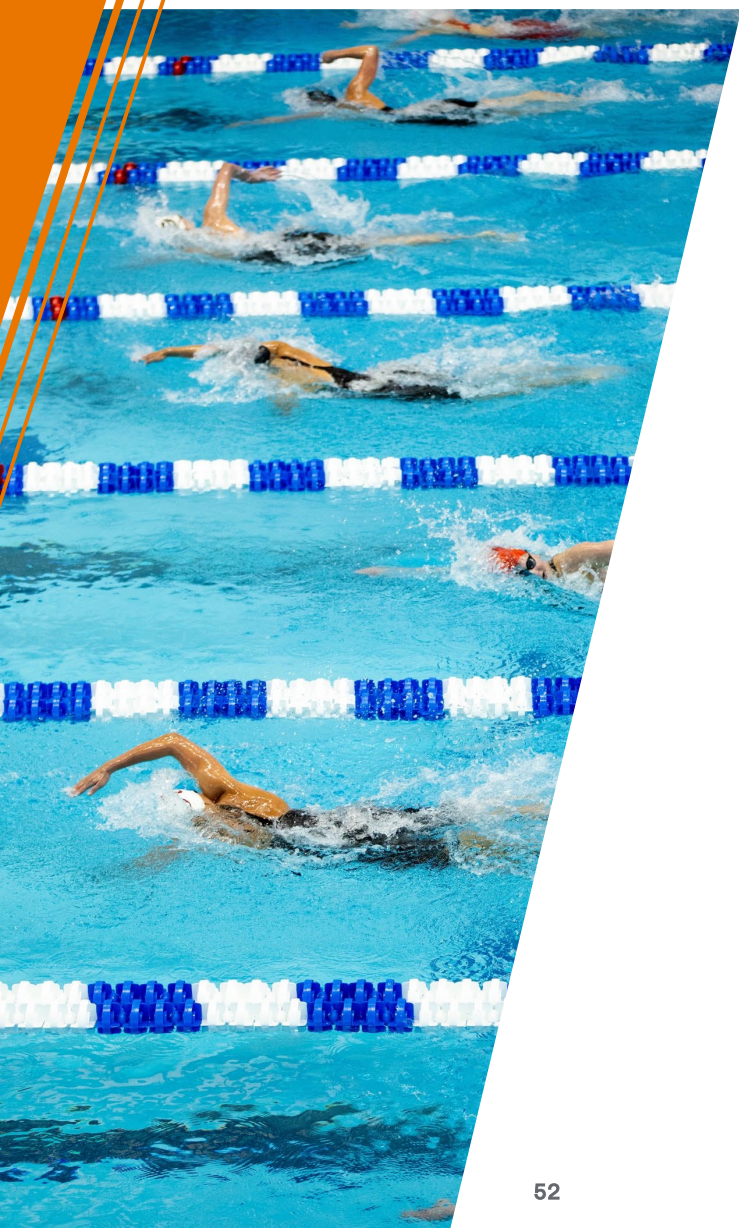
RECRUITING BEST PRACTICES

- » Encourage your student to talk with their support system about what level of competition they think the student should aim for.
- » Remind them to check their email often for open Eligibility Center tasks.
- » Encourage them to use this [interactive map](#) to locate NCAA schools they're interested in attending.
 - Help them research admission requirements to NCAA schools they're interested in attending.
- » Remind them to research their division- and sport-specific recruiting periods.



NAME, IMAGE AND LIKENESS

- » NCAA student-athletes can benefit from their NIL.
 - Encourage students to contact their state's High School Athletic Association for current legislation.
 - Encourage students to contact their future NCAA school's compliance office.
 - Follow the Eligibility Center on [Twitter](#), [Instagram](#), [YouTube](#) and [Facebook](#).



NATIONAL LETTER OF INTENT

- » By signing a NLI, the student agrees to attend a Division I or II school for one academic year.
- » NLI is voluntary and ends the recruiting process.
- » Athletics financial aid is provided for a minimum of one academic year.
 - Student must be admitted to the NCAA school.
 - Student must be eligible for financial aid under NCAA rules.
- » For more NLI information, visit nationalletter.org.



ELIGIBILITY CENTER

A large, stylized blue basketball with white lines is the central focus. The word 'NCAA' is written in large, white, bold, sans-serif letters across the middle of the basketball. The basketball is surrounded by a dark blue background with scattered confetti in shades of teal, orange, and yellow. The entire scene is framed by orange and red diagonal stripes on the left and right sides, and a white geometric pattern in the bottom right corner.

NCAA

RESOURCES



ELIGIBILITY CENTER

RESOURCES



Subscribe to the
Coaches Newsletter

- » [Guide for the College-Bound Student-Athlete.](#)
- » [Initial-Eligibility Flyer.](#)
- » [Home School Students.](#)
- » [International Students.](#)
- » [Education Impacting Disabilities.](#)



[@ncaaec](#)



[@playcollegesports](#)



[@ncaaec](#)



[@ncaaec](#)



ELIGIBILITY CENTER

UPCOMING FREE WEBINAR

For Your Students and Their Families



Share This Message



ELIGIBILITY CENTER

QUESTIONS?



**Take a Short Survey
on How We Did Today**



ELIGIBILITY CENTER

SOCIAL MEDIA

Follow the NCAA Eligibility Center



Twitter
[@ncaaec](https://twitter.com/ncaaec)



Instagram
[@playcollegesports](https://www.instagram.com/playcollegesports)



Facebook
[@ncaaec](https://www.facebook.com/ncaaec)



YouTube
[@ncaaec](https://www.youtube.com/ncaaec)



ELIGIBILITY CENTER

THANK YOU FOR JOINING!

Contact the Eligibility Center



Connect with the
Eligibility Center

» Coach and college-bound student-athlete support line.

- 877-262-1492.
 - > Monday-Friday.
 - > 9 a.m. to 5 p.m. Eastern time.



[@ncaaec](https://twitter.com/ncaaec)



[@playcollegesports](https://www.instagram.com/playcollegesports)



[@ncaaec](https://www.facebook.com/ncaaec)



[@ncaaec](https://www.youtube.com/ncaaec)